



# R&M

ELECTRICAL GROUP LTD

**SHARK**<sup>®</sup>  
GEL INSULATED JOINTS

## SHARK Low Voltage Gel Insulated Joints

New Product at R&M's Southampton Branch

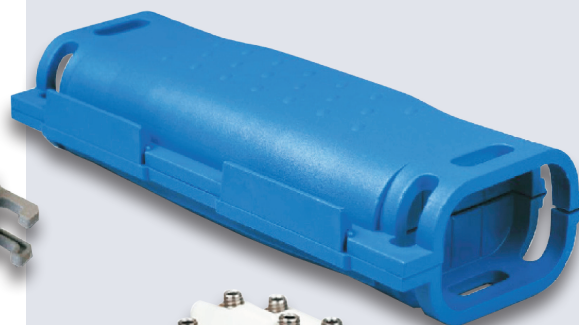
### SHARK 506W

Gel insulated straight through joint for steel wire armoured or unarmoured PVC, XLPE, EPR cables 0,61 kV up to five cores from 1,5 to 6mm<sup>2</sup>

### SHARK 525W

Gel insulated straight through joint for steel wire armoured or unarmoured PVC, XLPE, EPR cables 0,61 kV up to four cores from 6 to 16mm<sup>2</sup>

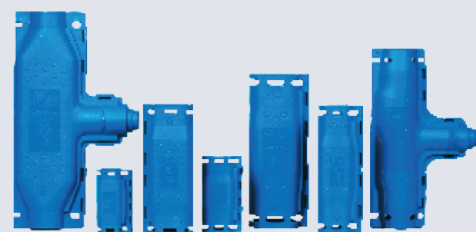
The kits contains: gel insulated joint, five core terminal block, allen key, armour bond kit with constant force roll springs and earth braid, complete with cable retention clamps.



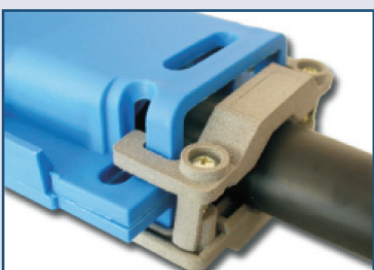
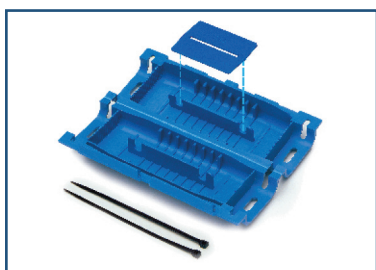
### ADVANTAGES

- Re-enterable
- No mixing and casting resins
- Fast and easy installation
- Reduced numbers of tools needed
- Inert and non-toxic materials
- No shelf life

### IN ACCORDANCE WITH EN 50393



Code	Type	Dimensions	Jointing
SH0125	SHARK 125	72x40x23	Single core 1x2.5 - 10mm <sup>2</sup>
SH0150	SHARK 150	86x46x28	Single core 1x16 - 35mm <sup>2</sup>
SH0410	SHARK 410	144x56x35	Multi core 2 - 4x2.5 - 10mm <sup>2</sup>
SH1410	SHARK 410/S	144x56x35	Single core 1x70 - 150mm <sup>2</sup>
SH0416	SHARK 416	178x72x40	Multi core 2 - 4x10 - 16mm <sup>2</sup>
SH1416	SHARK 416/S	178x72x40	Single core 1x95 - 240mm <sup>2</sup>
SH506W	SHARK 506W	210x72x50	Armoured 4cores 1.5 to 6mm
SH525W	SHARK 525W	270x77x50	Armoured 3 - 4x2.5 - 16mm <sup>2</sup> 5x2.5 - 10mm <sup>2</sup>



### R&M Electrical Group Ltd (Southampton)

Unit 1, Central Trading Estate, Marine Parade, Southampton, Hampshire SO14 5JP

Tel: **023 8023 1800** Fax: **023 8023 1818**

Email: [southampton@rm-electrical.com](mailto:southampton@rm-electrical.com) [www.rm-electrical.com](http://www.rm-electrical.com)

R&M Electrical Group Limited is registered in England and Wales No. 2218034.

Registered office: Units 1 & 2 362 Spring Road, Southampton, SO19 2PB, Hampshire.

