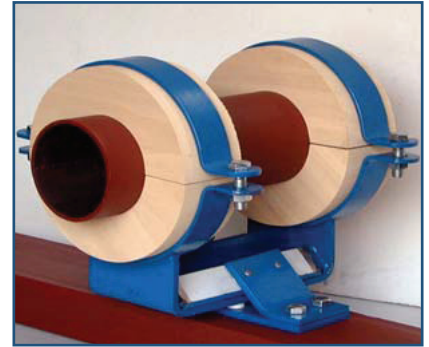




**R&M**  
FIXINGS & SUPPORTS LTD

# Hardwood Insulation Blocks

## At R&M Fixings and Supports



### Load Baring Application

Ghana West African Wawa Timber.

All timber is kiln dried.

Excellent load carrying capabilities.

Very durable for site environments

Individually cut to suit any thermal insulation therefore vapour seal can be readily achieved.

Further options available to aid vapour sealing.

This timber supplied is being produced in accordance with the ITTO guidelines for sustainable management of Natural Tropical Forests prepared national guidelines based on the ITTO principles and are firmly committed to the concept of sustainability, outlined at the 10th session of ITTO held in Ecuador in the year 2000.

Timber procured under the following scheme: FSC (Forest Stewardship Council) Can also be supplied where required.



Please find all technical data attached.

For more information on this product contact us

**023 8038 6800**

**R&M Fixings & Supports Ltd**

Unit 6, Central Trading Estate, Marine Parade, Southampton, Hampshire SO14 5JP

Fax: **023 8038 6808** Email: [fixings@rm-electrical.com](mailto:fixings@rm-electrical.com)

[www.rm-electrical.com](http://www.rm-electrical.com)

## Technical Data

### Standard Hardwood Block Dimensions (for pipe support brackets)

NB				NB				NB			
Imperial Steel Pipe	Pipe OD (mm)	Insulation Thickness (mm)	Hardwood Block OD (mm)	Imperial Steel Pipe	Pipe OD (mm)	Insulation Thickness (mm)	Hardwood Block OD (mm)	Metric Copper Tube	Pipe OD (mm)	Insulation Thickness (mm)	Hardwood Block OD (mm)
0.5"	21	15	54	4"	114	15	146	15mm	15	15	45
	21	20	60		114	20	152		15	20	54
	21	25	70		114	25	168		15	25	65
	21	30	83		114	30	173		15	30	76
	21	40	102		114	40	193		15	40	95
	21	50	121		114	50	216		15	50	114
0.75"	27	15	60	5"	140	15	168	22mm	22	15	54
	27	20	70		140	20	178		22	20	60
	27	25	76		140	25	186		22	25	70
	27	30	89		140	30	199		22	30	83
	27	40	108		140	40	216		22	40	102
	27	50	127		140	50	244		22	50	121
1"	34	15	65	6"	168	15	199	28mm	28	15	60
	34	20	76		168	20	208		28	20	70
	34	25	83		168	25	216		28	25	76
	34	30	95		168	30	225		28	30	89
	34	40	114		168	40	244		28	40	108
	34	50	133		168	50	268		28	50	127
1.25"	42	15	70	7"	193	15	225	35mm	35	15	65
	42	20	83		193	20	232		35	20	76
	42	25	89		193	25	244		35	25	83
	42	30	102		193	30	252		35	30	95
	42	40	121		193	40	273		35	40	114
	42	50	139		193	50	290		35	50	133
1.5"	48	15	76	8"	219	15	252	42mm	42	15	70
	48	20	89		219	20	259		42	20	83
	48	25	95		219	25	268		42	25	89
	48	30	108		219	30	283		42	30	102
	48	40	127		219	40	299		42	40	121
	48	50	146		219	50	323		42	50	139
2"	60	15	89	9"	244	15	268	54mm	54	15	83
	60	20	102		244	20	283		54	20	95
	60	25	108		244	25	290		54	25	102
	60	30	121		244	30	299		54	30	114
	60	40	139		244	40	323		54	40	133
	60	50	159		244	50	344		54	50	152
2.5"	76	15	108	10"	273	15	299	67mm	67	15	95
	76	20	114		273	20	308		67	20	108
	76	25	127		273	25	323		67	25	114
	76	30	133		273	30	335		67	30	127
	76	40	152		273	40	354		67	40	146
	76	50	178		273	50	374		67	50	168
3"	89	15	121	12"	324	15	354	76mm	76	15	108
	89	20	127		324	20	365		76	20	114
	89	25	139		324	25	374		76	25	127
	89	30	146		324	30	383		76	30	133
	89	40	168		324	40	406		76	40	152
	89	50	186		324	50	424		76	50	178